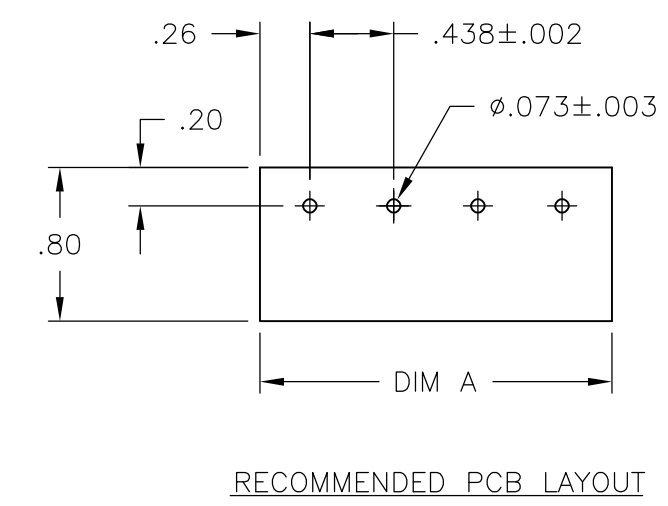
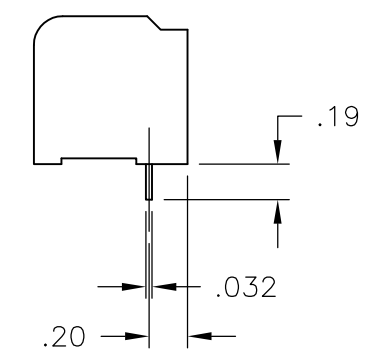
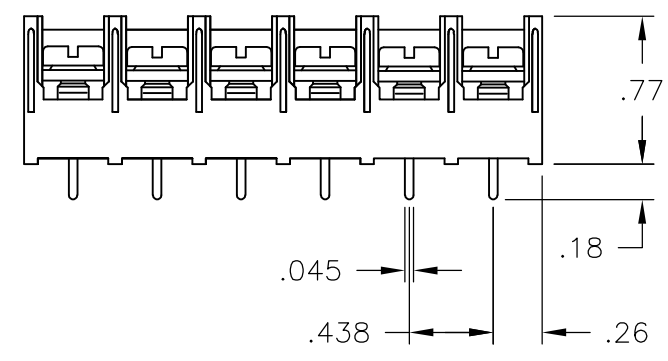
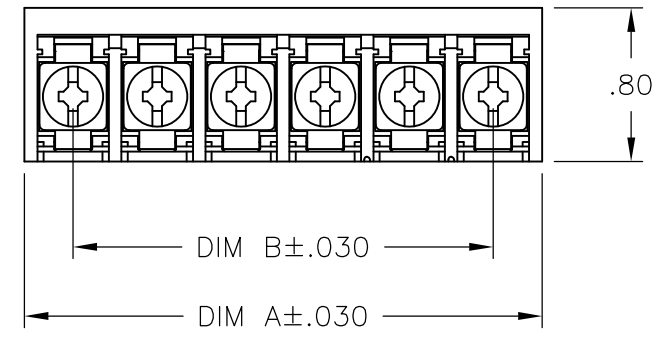


THIS DRAWING IS UNPUBLISHED. RELEASED FOR PUBLICATION
 © COPYRIGHT - BY TYCO ELECTRONICS CORPORATION. ALL INTERNATIONAL RIGHTS RESERVED.

| | | | | | | | |
|-----|------|-----------|-----|---------------------------|---------|-----|------|
| LOC | DIST | REVISIONS | | | | | |
| FT | 0 | P | LTR | DESCRIPTION | DATE | DWN | APVD |
| | | | J2 | REVISED PER ECO-08-017239 | 31OCT08 | HMR | CR |

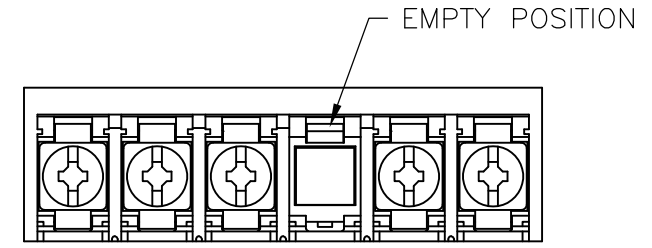
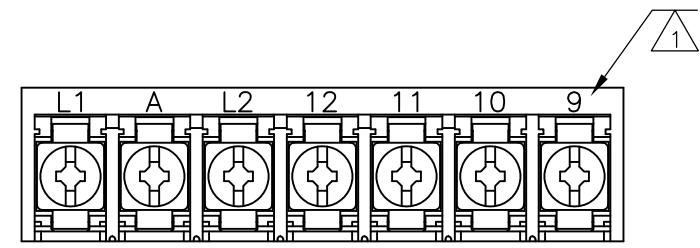
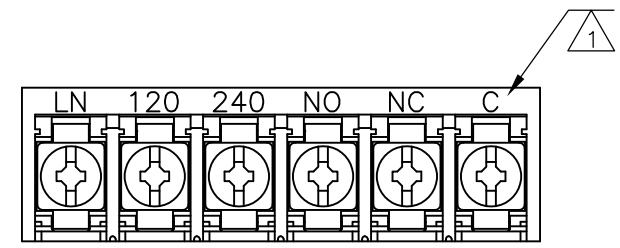
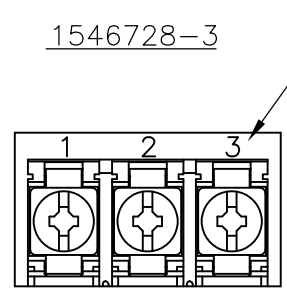
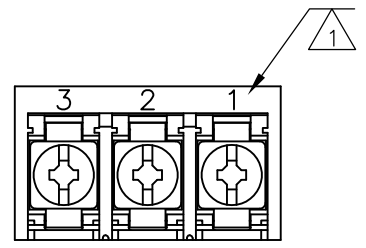


MATERIALS:
 HOUSING: THERMOPLASTIC, UL94V-0, BLACK.
 TERMINAL: BRIGHT TIN PLATED COPPER ALLOY.
 SCREWS: 8-32 ZINC PLATED STEEL.

ELECTRICAL:
 CURRENT RATING: 30A
 VOLTAGE RATING: 600V
 WIRE RANGE: 10-18 AWG (UL)
 10-22 AWG (CSA)

MECHANICAL:
 RECOMMENDED TORQUE: 20 IN-LB
 OPERATING TEMP.: -40°C TO +120°C.

MARK WITH WHITE INK.

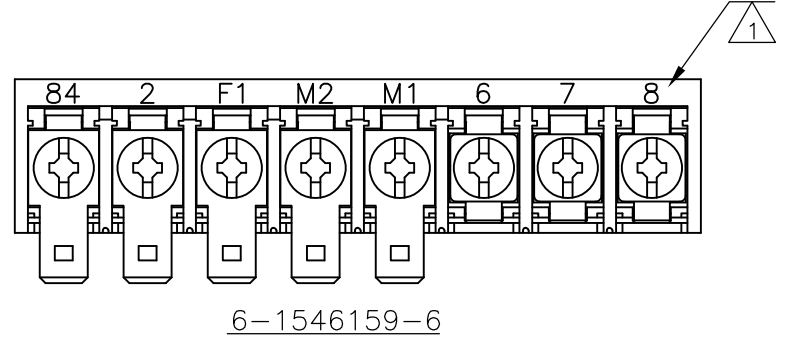


1546137-1

6-1546159-4

6-1546159-7

1546728-1




6-1546159-6

| | | | | | | | | | | | | | | | | | |
|---|--------|------------------|------------|----------------------|---|-------|-------|-------|--------|-------|-----|--------|-----|--------------|--|------|--|
| THIS DRAWING IS A CONTROLLED DOCUMENT. | | DWN | S SCHLEGEL | 5/15/03 | Tyco Electronics Corporation Harrisburg, PA 17105-3608 | | | | | | | | | | | | |
| DIMENSIONS: INCHES | | CHK | S YODER | 5/15/03 | | | | | | | | | | | | | |
| TOLERANCES UNLESS OTHERWISE SPECIFIED: | | APVD | S YODER | 5/15/03 | | | | | | | | | | | | | |
| <table border="0"> <tr><td>0 PLC</td><td>± -</td></tr> <tr><td>1 PLC</td><td>± -</td></tr> <tr><td>2 PLC</td><td>± .02</td></tr> <tr><td>3 PLC</td><td>± .010</td></tr> <tr><td>4 PLC</td><td>± -</td></tr> <tr><td>ANGLES</td><td>± -</td></tr> </table> | | 0 PLC | ± - | 1 PLC | ± - | 2 PLC | ± .02 | 3 PLC | ± .010 | 4 PLC | ± - | ANGLES | ± - | PRODUCT SPEC | | NAME | |
| 0 PLC | ± - | | | | | | | | | | | | | | | | |
| 1 PLC | ± - | | | | | | | | | | | | | | | | |
| 2 PLC | ± .02 | | | | | | | | | | | | | | | | |
| 3 PLC | ± .010 | | | | | | | | | | | | | | | | |
| 4 PLC | ± - | | | | | | | | | | | | | | | | |
| ANGLES | ± - | | | | | | | | | | | | | | | | |
| MATERIAL | | APPLICATION SPEC | | 8PCV-XX-006 ASSEMBLY | | | | | | | | | | | | | |
| FINISH | | WEIGHT | - | | RESTRICTED TO | | | | | | | | | | | | |
| - | | - | | SIZE | CAGE CODE | | | | | | | | | | | | |
| - | | - | | A3 | 00779 | | | | | | | | | | | | |
| - | | - | | DRAWING NO | | | | | | | | | | | | | |
| - | | - | | C-6-1437657-3 | | | | | | | | | | | | | |
| - | | - | | SCALE | SHEET | | | | | | | | | | | | |
| - | | - | | NTS | 1 OF 2 | | | | | | | | | | | | |
| - | | - | | REV | J2 | | | | | | | | | | | | |

THIS DRAWING IS UNPUBLISHED. RELEASED FOR PUBLICATION
 © COPYRIGHT - BY TYCO ELECTRONICS CORPORATION. ALL INTERNATIONAL RIGHTS RESERVED.

| LOC | DIST | REVISIONS | | | | |
|-----|------|-------------|------|-----|------|--|
| P | LTR | DESCRIPTION | DATE | DWN | APVD | |
| | | SEE SHEET 1 | - | - | - | |

| COMMENTS | DIM B | DIM A | NO OF POS | CATALOG NUMBER | TE PART NO |
|------------|-------|-------|-----------|----------------|-------------|
| - | 8.312 | 8.822 | 20 | 8PCV-20-006 | 8-1546159-2 |
| - | 7.875 | 8.385 | 19 | 8PCV-19-006 | 1546728-2 |
| - | 7.438 | 7.948 | 18 | 8PCV-18-006 | 7-1437658-2 |
| - | 7.000 | 7.510 | 17 | 8PCV-17-006 | 8-1546159-1 |
| - | 6.563 | 7.073 | 16 | 8PCV-16-006 | 6-1437658-6 |
| - | 6.125 | 6.635 | 15 | 8PCV-15-006 | 8-1437659-0 |
| - | 5.688 | 6.198 | 14 | 8PCV-14-006 | 6-1437658-0 |
| - | 5.250 | 5.760 | 13 | 8PCV-13-006 | 5-1437658-5 |
| - | 4.813 | 5.323 | 12 | 8PCV-12-006 | 4-1437658-5 |
| - | 4.375 | 4.885 | 11 | 8PCV-11-006 | 4-1437658-0 |
| - | 3.938 | 4.448 | 10 | 8PCV-10-006 | 3-1437658-3 |
| - | 3.500 | 4.010 | 9 | 8PCV-09-006 | 7-1546159-1 |
| SEE FIGURE | 3.063 | 3.573 | 8 | 8PCV-08-502 | 6-1546159-9 |
| - | 3.063 | 3.573 | 8 | 8PCV-08-006 | 2-1437658-1 |
| SEE FIGURE | 2.625 | 3.135 | 7 | 8PCV-07-598 | 6-1546159-7 |
| - | 2.625 | 3.135 | 7 | 8PCV-07-623 | 1-1437658-6 |
| - | 2.625 | 3.135 | 7 | 8PCV-07-006 | 1-1437658-1 |
| SEE FIGURE | 2.187 | 2.697 | 6 | 8PCV-06-653 | 1546728-1 |
| SEE FIGURE | 2.187 | 2.697 | 6 | 8PCV-06-538 | 6-1546159-4 |
| - | 2.187 | 2.697 | 6 | 8PCV-06-006 | 9-1437657-8 |
| OBSOLETE | 1.750 | 2.260 | 5 | 8PCV-05-637 | 9-1437657-4 |
| - | 1.750 | 2.260 | 5 | 8PCV-05-006 | 8-1437657-8 |
| OBSOLETE | 1.312 | 1.822 | 4 | 8PCV-04-636 | 8-1437657-3 |
| - | 1.312 | 1.822 | 4 | 8PCV-04-006 | 8-1437657-0 |
| SEE FIGURE | .875 | 1.385 | 3 | 8PCV-03-662 | 1546728-3 |
| SEE FIGURE | .875 | 1.385 | 3 | 8PCV-03-657 | 1546137-1 |
| - | .875 | 1.385 | 3 | 8PCV-03-006 | 6-1437657-9 |
| - | .437 | .947 | 2 | 8PCV-02-006 | 5-1437657-7 |
| - | .437 | .947 | 2 | 8PCV-02-634 | 6-1437657-3 |

| | | | | | | |
|--|--|------------------------|---|-----------|---------------|---------------|
| THIS DRAWING IS A CONTROLLED DOCUMENT. | | DWN S SCHLEGEL 5/15/03 |  Tyco Electronics Corporation Harrisburg, PA 17105-3608 | | | |
| DIMENSIONS: INCHES | | CHK S YODER 5/15/03 | | | | |
| TOLERANCES UNLESS OTHERWISE SPECIFIED: | | APVD S YODER 5/15/03 | NAME | | | |
| 0 PLC ± - 1 PLC ± - 2 PLC ± .02 3 PLC ± .010 4 PLC ± - ANGLES ± - | | PRODUCT SPEC | 8PCV-XX-006 ASSEMBLY | | | |
| MATERIAL | | APPLICATION SPEC | SIZE | CAGE CODE | DRAWING NO | RESTRICTED TO |
| FINISH | | WEIGHT | A3 | 00779 | G-6-1437657-3 | - |
| CUSTOMER DRAWING | | | SCALE | SHEET | REV | |
| | | | NTS | 2 OF 2 | J2 | |